



GIA
GEM TRADE LABORATORY

New York Headquarters
580 Fifth Avenue | New York, NY 10036-4794
T: 212-221-5858 | F: 212-575-3885

Carlsbad
5355 Armada Drive | Carlsbad, CA 92008-4699
T: 760-603-4500 | F: 760-603-1814

DIAMOND GRADING REPORT

August 19, 2004

Laser Inscription Registry GIA

Shape and Cutting Style SQUARE MODIFIED
BRILLIANT

Measurements 5.31 x 5.26 x 4.14 mm

Weight 1.01 carat

Proportions

Depth 78.7 %

Table 79 %

Girdle SLIGHTLY THICK TO VERY THICK

Culet NONE

Finish

Polish EXCELLENT

Symmetry VERY GOOD

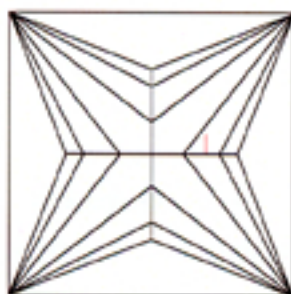
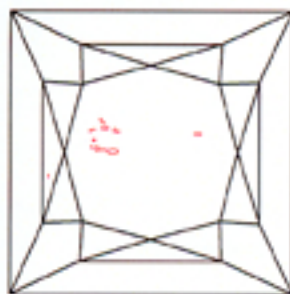
Clarity Grade SI1

Color Grade E

Fluorescence FAINT

Comments:

Clouds are not shown.



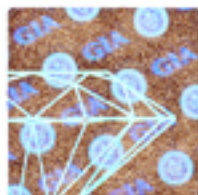
KEY TO SYMBOLS

- Crystal
- ~ Feather

GIA CLARITY SCALE		GIA COLOR SCALE	
FLAWLESS		D	
INTERNALLY FLAWLESS		E	
VVS ₁	CLARITY CHARACTERISTICS ARE NOT SHOWN	F	
VVS ₂	CLARITY CHARACTERISTICS ARE NOT SHOWN	G	
VS ₁	CLARITY CHARACTERISTICS ARE NOT SHOWN	H	
VS ₂	CLARITY CHARACTERISTICS ARE NOT SHOWN	I	
SI ₁	CLARITY CHARACTERISTICS ARE NOT SHOWN	J	
SI ₂	CLARITY CHARACTERISTICS ARE NOT SHOWN	K	
		L	
		M	
		N	
		O	
		P	
		Q	
		R	
		S	
		T	
		U	
		V	
		W	
		X	
		Y	
		Z	



This Report is not a guarantee, valuation or appraisal. This Report contains only the characteristics of the diamond described herein after it has been graded, tested, examined and analyzed by GIA Gem Trade Laboratory under 10X magnification, and/or has been inscribed, using the techniques and equipment available to GIA Gem Trade Laboratory at the time of the examination and/or at the time of being inscribed, including fully corrected triplet loupe and binocular microscope, master color comparison diamonds, standardized viewing environment and light source, electronic carat balance, synthetic diamond screening device, high intensity short wave fluorescence imaging system, short wave ultraviolet transmission detection system, optical measuring device, micro laser inscribing device, ProportionScope[®], ultraviolet lamps, millimeter gauge, and ancillary instruments as necessary. Red symbols denote internal characteristics (inclusions); Green or black symbols denote external characteristics (blemishes). Diagram is an approximate representation of the diamond, and symbols shown indicate type, position, and approximate size of clarity characteristics. All clarity characteristics may not be shown. Details of finish are not shown. The recipient of this Report may wish to consult a credentialed Jeweler or Gemologist about the importance and interrelationship of cut, color, clarity and carat weight.



IMPORTANT DOCUMENT. STORE SAFELY

The security features in this document, including the hologram, security screen, microprint lines and substrate durability, are subject to change without notice. Contact Gemological Institute of America for details.

NOTICE: IMPORTANT LIMITATIONS ON BACK

COPYRIGHT ©2000 GEMOLOGICAL INSTITUTE OF AMERICA, INC.